

D-M-E Edge Mold Base

**Economical off the Shelf Mold Bases
That Provide a Competitive Edge**



D-M-E
Every step of the way

Providing a Competitive Advantage

THE NEW EDGE MOLD BASE GIVES YOUR CUSTOMERS A COMPETITIVE ADVANTAGE

What is the "Edge" concept? It's an A-Series Mold Base with seven features in D-M-E #3 steel with a 30-40% price advantage. And with every Edge Mold Base, you get seven decades of reliable D-M-E quality-assured manufacturing capabilities that includes the absolute best service, price and delivery that will have your customers coming back for more.

D-M-E has supported moldmakers, processors and designers around the globe since it innovated the standard mold base in 1942. Today, we offer the industry's broadest range of market-leading products. In a recent Moldmaking Industry Survey, moldmakers said they needed an edge to better compete. That's why our full featured, ready-to-ship mold base is called the Edge. Essentially, moldmakers named it for us! The Edge gives you the competitive and profitability advantages that D-M-E customers demand.

As you continue to positively impact your operations through process efficiencies, technology enhancements, and automation improvements, the D-M-E Edge Mold Base is with you every step of the way by providing the value, speed and exceptional quality that customers have long expected from the industry's standard-setter in mold technologies. Even our competitors look to us as standard-setters; so much so, that today, competitors still promote their products by comparing them to ours.

Get the Edge Mold Base and you'll have another ingredient for the formula for a successful, growing business, and a partnership with the global mold technologies leader.

FREQUENTLY ASKED QUESTIONS ABOUT D-M-E

Where is the Edge Mold Base manufactured?

The D-M-E Edge Mold Base is manufactured by D-M-E's sister company located in Brazil. D-M-E has had an extensive manufacturing and distributing presence in Brazil for over 20 years. The Edge Mold Base is manufactured using the same stringent quality-assured processes and standards that have been adhered to during the manufacture of D-M-E U.S.-made mold bases for many decades. This manufacturing consistency and repeatability on every continent ensures D-M-E customers that every mold base has the quality steel and construction that makes D-M-E mold bases the highest valued mold bases throughout the world.

I make my own mold bases; can the D-M-E Edge Mold Base make me more competitive?

Yes! With our low U.S. prices, the Edge Mold Base is more than competitive when compared against in-house manufactured bases. In today's marketplace, most moldmakers don't have the luxury of having tool makers and/or apprentices make mold bases. Factoring direct labor costs alone, the D-M-E Edge Mold Base is priced so low that even the most efficient shop will save money by purchasing instead of making.

**Industry-leading D-M-E Manufacturing, Tolerances and Distribution!
Get the competitive and profitability advantage with the D-M-E Edge!**

Advantages and Features

EDGE MOLD BASE ADVANTAGES

- 70 different mold base assemblies ready for quick delivery
- The lowest-priced mold base on the market
- Most sizes available for same-day shipment
- Seven popular mold base features
- Reliable D-M-E quality-assured services, including manufacturing, inspection and distribution

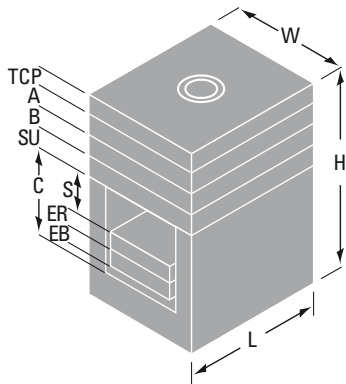


EDGE MOLD BASE FEATURES

- Top Clamp plate, A-Plate, B-Plate and Support plates supplied with D-M-E #3 steel
- Leader Pin vents machined in the housing under the bushing location
- Guided Ejection
- Three-piece ejector housing
- Lift Holes in Top Clamp Plate and Support Plate
- Pry slots installed on both sides of "B" plate
- Return Pins installed 0.125 inboard to allow for spring pockets
- Center hole machining for Locating Ring, Sprue Bushing

NOTE: See the DME North American Mold Bases & Plates catalog, Standard & Optional Mold Base Features section or our website for specifications regarding Edge Mold Base features.

Product Selection Tables



Variables

Below is a list of the variables for the Edge series mold bases and their definitions

- W = Width
- L = Length
- TCP = Top clamp plate thickness
- A = A plate thickness
- B = B plate thickness
- SU = Support plate thickness
- C = Height of the riser
- S = Maximum stroke of the ejector bar
- H = Mold base height
- EB = Ejector bar thickness
- ER = Ejector retainer thickness
- P = Housing riser thickness
- RPx = Return pin location on the X axis (3 places)
- RPy = Return pin location on the Y axis (4 places)
- RPos = Return pin offset on the X axis (1 place)
- RPg = Return pin diameter
- LPg = Leader pin diameter

7.875 × 7.875

| ITEM NUMBER | W | L | A | B | C | S | H | WEIGHT (LBS) |
|-----------------|-------|-------|-------|-------|-------|-------|--------|--------------|
| EDA0808-07-07-3 | 7.875 | 7.875 | 0.875 | 0.875 | 2.500 | 0.813 | 7.375 | 111 |
| EDA0808-13-13-3 | 7.875 | 7.875 | 1.375 | 1.375 | 2.500 | 0.813 | 8.375 | 129 |
| EDA0808-17-17-3 | 7.875 | 7.875 | 1.875 | 1.875 | 2.500 | 0.813 | 9.375 | 147 |
| EDA0808-23-23-3 | 7.875 | 7.875 | 2.375 | 2.375 | 3.000 | 1.313 | 10.875 | 167 |

| | | | | | | | | | | | | |
|-----------|---|-------|----|-------|----|-------|------|-------|-----|-------|-----|-------|
| All Items | W | 7.875 | EB | 1.000 | P | 1.250 | TCP | 1.375 | RPx | 3.313 | RPg | 0.500 |
| | L | 7.875 | ER | 0.500 | SU | 1.375 | RPos | 3.188 | RPy | 1.500 | LPg | 0.750 |

7.875 × 11.875

| ITEM NUMBER | W | L | A | B | C | S | H | WEIGHT (LBS) |
|-----------------|-------|--------|-------|-------|-------|-------|--------|--------------|
| EDA0812-07-07-3 | 7.875 | 11.875 | 0.875 | 0.875 | 2.500 | 0.813 | 7.375 | 174 |
| EDA0812-13-13-3 | 7.875 | 11.875 | 1.375 | 1.375 | 3.000 | 1.313 | 8.875 | 205 |
| EDA0812-17-17-3 | 7.875 | 11.875 | 1.875 | 1.875 | 3.500 | 1.813 | 10.375 | 235 |
| EDA0812-23-23-3 | 7.875 | 11.875 | 2.375 | 2.375 | 3.500 | 1.813 | 11.375 | 262 |

| | | | | | | | | | | | | |
|-----------|---|--------|----|-------|----|-------|------|-------|-----|-------|-----|-------|
| All Items | W | 7.875 | EB | 1.000 | P | 1.250 | TCP | 1.375 | RPx | 5.313 | RPg | 0.500 |
| | L | 11.875 | ER | 0.500 | SU | 1.375 | RPos | 5.188 | RPy | 1.500 | LPg | 0.750 |

9.875 × 8.000

| ITEM NUMBER | W | L | A | B | C | S | H | WEIGHT (LBS) |
|-----------------|-------|-------|-------|-------|-------|-------|--------|--------------|
| EDA1008-07-07-3 | 9.875 | 8.000 | 0.875 | 0.875 | 2.500 | 0.813 | 7.375 | 158 |
| EDA1008-13-13-3 | 9.875 | 8.000 | 1.375 | 1.375 | 2.500 | 0.813 | 8.875 | 181 |
| EDA1008-17-17-3 | 9.875 | 8.000 | 1.875 | 1.875 | 3.500 | 1.813 | 10.875 | 209 |

| | | | | | | | | | | | | |
|-----------|---|-------|----|-------|----|-------|------|-------|-----|-------|-----|-------|
| All Items | W | 9.875 | EB | 1.000 | P | 1.438 | TCP | 1.375 | RPx | 3.250 | RPg | 0.625 |
| | L | 8.000 | ER | 0.500 | SU | 1.875 | RPos | 3.125 | RPy | 2.250 | LPg | 0.750 |

9.875 × 11.875

| ITEM NUMBER | W | L | A | B | C | S | H | WEIGHT (LBS) |
|-----------------|-------|--------|-------|-------|-------|-------|--------|--------------|
| EDA1012-07-07-3 | 9.875 | 11.875 | 0.875 | 0.875 | 2.500 | 0.813 | 7.875 | 235 |
| EDA1012-13-13-3 | 9.875 | 11.875 | 1.375 | 1.375 | 3.000 | 1.313 | 9.375 | 273 |
| EDA1012-17-17-3 | 9.875 | 11.875 | 1.875 | 1.875 | 3.500 | 1.813 | 10.875 | 311 |
| EDA1012-23-23-3 | 9.875 | 11.875 | 2.375 | 2.375 | 3.500 | 1.813 | 11.875 | 344 |

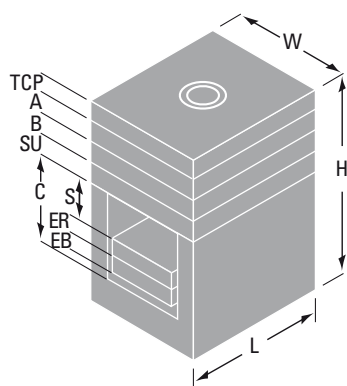
| | | | | | | | | | | | | |
|-----------|---|--------|----|-------|----|-------|------|-------|-----|-------|-----|-------|
| All Items | W | 9.875 | EB | 1.000 | P | 1.438 | TCP | 1.375 | RPx | 5.188 | RPg | 0.625 |
| | L | 11.875 | ER | 0.500 | SU | 1.875 | RPos | 5.063 | RPy | 2.250 | LPg | 0.875 |

9.875 × 16.000

| ITEM NUMBER | W | L | A | B | C | S | H | WEIGHT (LBS) |
|-----------------|-------|--------|-------|-------|-------|-------|--------|--------------|
| EDA1016-07-07-3 | 9.875 | 16.000 | 0.875 | 0.875 | 2.500 | 0.813 | 7.875 | 316 |
| EDA1016-13-13-3 | 9.875 | 16.000 | 1.375 | 1.375 | 3.000 | 1.313 | 9.375 | 367 |
| EDA1016-17-17-3 | 9.875 | 16.000 | 1.875 | 1.875 | 3.500 | 1.813 | 10.875 | 418 |
| EDA1016-23-23-3 | 9.875 | 16.000 | 2.375 | 2.375 | 3.500 | 1.813 | 11.875 | 463 |

| | | | | | | | | | | | | |
|-----------|---|--------|----|-------|----|-------|------|-------|-----|-------|-----|-------|
| All Items | W | 9.875 | EB | 1.000 | P | 1.438 | TCP | 1.375 | RPx | 7.250 | RPg | 0.625 |
| | L | 16.000 | ER | 0.500 | SU | 1.875 | RPos | 7.125 | RPy | 2.250 | LPg | 0.875 |

Product Selection Tables



Below is a list of the variables for the Edge series mold bases and their definitions

W = Width

L = Length

TCP = Top clamp plate thickness

A = A plate thickness

B = B plate thickness

SU = Support plate thickness

C = Height of the riser

S = Maximum stroke of the ejector bar

H = Mold base height

EB = Ejector bar thickness

ER = Ejector retainer thickness

P = Housing riser thickness

RPx = Return pin location on the X axis (3 places)

RPy = Return pin location on the Y axis (4 places)

RPos = Return pin offset on the X axis (1 place)

RPg = Return pin diameter

LPg = Leader pin diameter

9.875 × 20.000

| ITEM NUMBER | W | L | A | B | C | S | H | WEIGHT (LBS) |
|-----------------|-------|--------|-------|-------|-------|-------|--------|--------------|
| EDA1020-13-13-3 | 9.875 | 20.000 | 1.375 | 1.375 | 3.000 | 1.313 | 9.375 | 459 |
| EDA1020-17-17-3 | 9.875 | 20.000 | 1.875 | 1.875 | 3.500 | 1.813 | 10.875 | 523 |
| EDA1020-23-23-3 | 9.875 | 20.000 | 2.375 | 2.375 | 3.500 | 1.813 | 11.875 | 579 |

| All Items | W | 9.875 | EB | 1.000 | P | 1.438 | TCP | 1.375 | RPx | 9.250 | RPg | 0.625 |
|-----------|---|--------|----|-------|----|-------|------|-------|-----|-------|-----|-------|
| | L | 20.000 | ER | 0.500 | SU | 1.875 | RPos | 9.125 | RPy | 2.250 | LPg | 0.875 |

10.875 × 12.000

| ITEM NUMBER | W | L | A | B | C | S | H | WEIGHT (LBS) |
|-----------------|--------|--------|-------|-------|-------|-------|--------|--------------|
| EDA1112-13-13-3 | 10.875 | 12.000 | 1.375 | 1.375 | 3.000 | 1.313 | 9.375 | 305 |
| EDA1112-17-17-3 | 10.875 | 12.000 | 1.875 | 1.875 | 3.500 | 1.813 | 10.875 | 347 |
| EDA1112-23-23-3 | 10.875 | 12.000 | 2.375 | 2.375 | 3.500 | 1.813 | 11.875 | 384 |

| All Items | W | 10.875 | EB | 1.000 | P | 1.688 | TCP | 1.375 | RPx | 5.250 | RPg | 0.625 |
|-----------|---|--------|----|-------|----|-------|------|-------|-----|-------|-----|-------|
| | L | 12.000 | ER | 0.500 | SU | 1.875 | RPos | 5.125 | RPy | 2.813 | LPg | 0.875 |

10.875 × 14.000

| ITEM NUMBER | W | L | A | B | C | S | H | WEIGHT (LBS) |
|-----------------|--------|--------|-------|-------|-------|-------|--------|--------------|
| EDA1114-13-13-3 | 10.875 | 14.000 | 1.375 | 1.375 | 3.000 | 1.313 | 9.375 | 355 |
| EDA1114-17-17-3 | 10.875 | 14.000 | 1.875 | 1.875 | 3.500 | 1.813 | 10.875 | 405 |
| EDA1114-23-23-3 | 10.875 | 14.000 | 2.375 | 2.375 | 3.500 | 1.813 | 11.875 | 448 |

| All Items | W | 10.875 | EB | 1.000 | P | 1.688 | TCP | 1.375 | RPx | 6.250 | RPg | 0.625 |
|-----------|---|--------|----|-------|----|-------|------|-------|-----|-------|-----|-------|
| | L | 14.000 | ER | 0.500 | SU | 1.875 | RPos | 6.125 | RPy | 2.813 | LPg | 0.875 |

10.875 × 18.000

| ITEM NUMBER | W | L | A | B | C | S | H | WEIGHT (LBS) |
|-----------------|--------|--------|-------|-------|-------|-------|--------|--------------|
| EDA1118-13-13-3 | 10.875 | 18.000 | 1.375 | 1.375 | 3.000 | 1.313 | 9.375 | 457 |
| EDA1118-17-17-3 | 10.875 | 18.000 | 1.875 | 1.875 | 3.500 | 1.813 | 10.875 | 521 |
| EDA1118-23-23-3 | 10.875 | 18.000 | 2.375 | 2.375 | 3.500 | 1.813 | 11.875 | 576 |

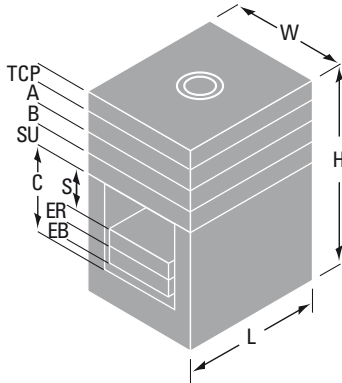
| All Items | W | 10.875 | EB | 1.000 | P | 1.688 | TCP | 1.375 | RPx | 8.250 | RPg | 0.625 |
|-----------|---|--------|----|-------|----|-------|------|-------|-----|-------|-----|-------|
| | L | 18.000 | ER | 0.500 | SU | 1.875 | RPos | 8.125 | RPy | 2.813 | LPg | 0.875 |

11.875 × 12.000

| ITEM NUMBER | W | L | A | B | C | S | H | WEIGHT (LBS) |
|-----------------|--------|--------|-------|-------|-------|-------|--------|--------------|
| EDA1212-13-13-3 | 11.875 | 12.000 | 1.375 | 1.375 | 3.000 | 1.188 | 9.375 | 335 |
| EDA1212-17-17-3 | 11.875 | 12.000 | 1.875 | 1.875 | 3.000 | 1.188 | 10.375 | 375 |
| EDA1212-23-23-3 | 11.875 | 12.000 | 2.375 | 2.375 | 3.500 | 1.688 | 11.875 | 422 |
| EDA1212-27-27-3 | 11.875 | 12.000 | 2.875 | 2.875 | 4.000 | 2.188 | 13.375 | 468 |

| All Items | W | 11.875 | EB | 1.125 | P | 1.688 | TCP | 1.375 | RPx | 5.125 | RPg | 0.750 |
|-----------|---|--------|----|-------|----|-------|------|-------|-----|-------|-----|-------|
| | L | 12.000 | ER | 0.500 | SU | 1.875 | RPos | 5.000 | RPy | 3.188 | LPg | 1.000 |

Product Selection Tables



Variables

Below is a list of the variables for the Edge series mold bases and their definitions

- W = Width
- L = Length
- TCP = Top clamp plate thickness
- A = A plate thickness
- B = B plate thickness
- SU = Support plate thickness
- C = Height of the riser
- S = Maximum stroke of the ejector bar
- H = Mold base height
- EB = Ejector bar thickness
- ER = Ejector retainer thickness
- P = Housing riser thickness
- RPx = Return pin location on the X axis (3 places)
- RPy = Return pin location on the Y axis (4 places)
- RPoS = Return pin offset on the X axis (1 place)
- RPg = Return pin diameter
- LPg = Leader pin diameter

11.875 × 15.000

| ITEM NUMBER | W | L | A | B | C | S | H | WEIGHT (LBS) |
|-----------------|----------|----------|----------|------------|-----------|-----------|--------|--------------|
| EDA1215-13-13-3 | 11.875 | 15.000 | 1.375 | 1.375 | 3.000 | 1.188 | 9.375 | 419 |
| EDA1215-17-17-3 | 11.875 | 15.000 | 1.875 | 1.875 | 3.000 | 1.188 | 10.375 | 469 |
| EDA1215-23-23-3 | 11.875 | 15.000 | 2.375 | 2.375 | 3.500 | 1.688 | 11.875 | 527 |
| EDA1215-27-27-3 | 11.875 | 15.000 | 2.875 | 2.875 | 4.000 | 2.188 | 13.375 | 584 |
| All Items | W 11.875 | EB 1.125 | P 1.688 | TCP 1.375 | RPx 6.625 | RPg 0.750 | | |
| | L 15.000 | ER 0.500 | SU 1.875 | RPOs 6.500 | RPy 3.188 | LPg 1.000 | | |

11.875 × 20.000

| ITEM NUMBER | W | L | A | B | C | S | H | WEIGHT (LBS) |
|-----------------|----------|----------|----------|------------|-----------|-----------|--------|--------------|
| EDA1220-13-13-3 | 11.875 | 20.000 | 1.375 | 1.375 | 3.000 | 1.188 | 9.375 | 558 |
| EDA1220-17-17-3 | 11.875 | 20.000 | 1.875 | 1.875 | 3.000 | 1.188 | 10.375 | 625 |
| EDA1220-23-23-3 | 11.875 | 20.000 | 2.375 | 2.375 | 3.500 | 1.688 | 11.875 | 702 |
| EDA1220-27-27-3 | 11.875 | 20.000 | 2.875 | 2.875 | 4.000 | 2.188 | 13.375 | 779 |
| All Items | W 11.875 | EB 1.125 | P 1.688 | TCP 1.375 | RPx 9.125 | RPg 0.750 | | |
| | L 20.000 | ER 0.500 | SU 1.875 | RPOs 9.000 | RPy 3.188 | LPg 1.000 | | |

13.375 × 15.000

| ITEM NUMBER | W | L | A | B | C | S | H | WEIGHT (LBS) |
|-----------------|----------|----------|----------|------------|-----------|-----------|--------|--------------|
| EDA1315-13-13-3 | 13.375 | 15.000 | 1.375 | 1.375 | 3.000 | 1.063 | 9.875 | 505 |
| EDA1315-17-17-3 | 13.375 | 15.000 | 1.875 | 1.875 | 3.000 | 1.063 | 10.875 | 562 |
| EDA1315-23-23-3 | 13.375 | 15.000 | 2.375 | 2.375 | 3.500 | 1.563 | 12.375 | 627 |
| EDA1315-27-27-3 | 13.375 | 15.000 | 2.875 | 2.875 | 4.000 | 2.063 | 13.875 | 692 |
| All Items | W 13.375 | EB 1.125 | P 1.875 | TCP 1.375 | RPx 6.625 | RPg 0.750 | | |
| | L 15.000 | ER 0.625 | SU 1.875 | RPOs 6.500 | RPy 3.813 | LPg 1.000 | | |

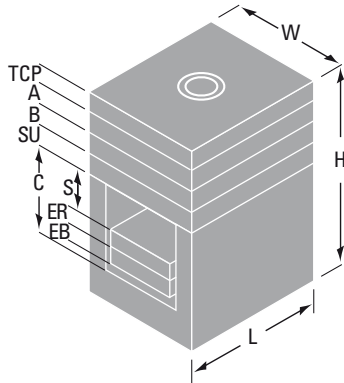
13.375 × 18.000

| ITEM NUMBER | W | L | A | B | C | S | H | WEIGHT (LBS) |
|-----------------|----------|----------|----------|------------|-----------|-----------|--------|--------------|
| EDA1318-13-13-3 | 13.375 | 18.000 | 1.375 | 1.375 | 3.000 | 1.063 | 9.875 | 606 |
| EDA1318-17-17-3 | 13.375 | 18.000 | 1.875 | 1.875 | 3.000 | 1.063 | 10.875 | 675 |
| EDA1318-23-23-3 | 13.375 | 18.000 | 2.375 | 2.375 | 3.500 | 1.563 | 12.375 | 752 |
| EDA1318-27-27-3 | 13.375 | 18.000 | 2.875 | 2.875 | 4.000 | 2.063 | 13.875 | 830 |
| All Items | W 13.375 | EB 1.125 | P 1.875 | TCP 1.375 | RPx 8.125 | RPg 0.750 | | |
| | L 18.000 | ER 0.625 | SU 1.875 | RPOs 8.000 | RPy 3.813 | LPg 1.000 | | |

13.375 × 20.750

| ITEM NUMBER | W | L | A | B | C | S | H | WEIGHT (LBS) |
|-----------------|----------|----------|----------|------------|-----------|-----------|--------|--------------|
| EDA1321-17-17-3 | 13.375 | 20.750 | 1.875 | 1.875 | 3.000 | 1.063 | 10.875 | 777 |
| EDA1321-23-23-3 | 13.375 | 20.750 | 2.375 | 2.375 | 3.500 | 1.563 | 12.375 | 867 |
| EDA1321-27-27-3 | 13.375 | 20.750 | 2.875 | 2.875 | 4.000 | 2.063 | 13.875 | 957 |
| All Items | W 13.375 | EB 1.125 | P 1.875 | TCP 1.375 | RPx 9.500 | RPg 0.750 | | |
| | L 20.750 | ER 0.625 | SU 1.875 | RPOs 9.375 | RPy 3.813 | LPg 1.000 | | |

Product Selection Tables



Variables

Below is a list of the variables for the Edge series mold bases and their definitions

- W = Width
- L = Length
- TCP = Top clamp plate thickness
- A = A plate thickness
- B = B plate thickness
- SU = Support plate thickness
- C = Height of the riser
- S = Maximum stroke of the ejector bar
- H = Mold base height
- EB = Ejector bar thickness
- ER = Ejector retainer thickness
- P = Housing riser thickness
- RPx = Return pin location on the X axis (3 places)
- RPy = Return pin location on the Y axis (4 places)
- RPos = Return pin offset on the X axis (1 place)
- RPg = Return pin diameter
- LPg = Leader pin diameter

13.375 × 23.500

| ITEM NUMBER | W | L | A | B | C | S | H | WEIGHT (LBS) |
|-----------------|----------|----------|----------|-------------|------------|-----------|--------|--------------|
| EDA1323-17-17-3 | 13.375 | 23.500 | 1.875 | 1.875 | 3.000 | 1.063 | 10.875 | 881 |
| EDA1323-23-23-3 | 13.375 | 23.500 | 2.375 | 2.375 | 3.500 | 1.563 | 12.375 | 982 |
| EDA1323-27-27-3 | 13.375 | 23.500 | 2.875 | 2.875 | 4.000 | 2.063 | 13.875 | 1084 |
| All Items | W 13.375 | EB 1.125 | P 1.875 | TCP 1.375 | RPx 10.875 | RPg 0.750 | | |
| | L 23.500 | ER 0.625 | SU 1.875 | RPos 10.750 | RPy 3.813 | LPg 1.000 | | |

14.875 × 17.875

| ITEM NUMBER | W | L | A | B | C | S | H | WEIGHT (LBS) |
|-----------------|----------|----------|----------|------------|-----------|-----------|--------|--------------|
| EDA1518-17-17-3 | 14.875 | 17.875 | 1.875 | 1.875 | 3.500 | 1.563 | 11.875 | 790 |
| EDA1518-23-23-3 | 14.875 | 17.875 | 2.375 | 2.375 | 3.500 | 1.563 | 12.875 | 865 |
| EDA1518-27-27-3 | 14.875 | 17.875 | 2.875 | 2.875 | 4.000 | 2.063 | 14.375 | 950 |
| All Items | W 14.875 | EB 1.125 | P 1.875 | TCP 1.375 | RPx 8.063 | RPg 0.750 | | |
| | L 17.875 | ER 0.625 | SU 2.375 | RPos 7.938 | RPy 3.875 | LPg 1.250 | | |

14.875 × 23.750

| ITEM NUMBER | W | L | A | B | C | S | H | WEIGHT (LBS) |
|-----------------|----------|----------|----------|-------------|------------|-----------|--------|--------------|
| EDA1524-17-17-3 | 14.875 | 23.750 | 1.875 | 1.875 | 3.500 | 1.563 | 11.875 | 1050 |
| EDA1524-23-23-3 | 14.875 | 23.750 | 2.375 | 2.375 | 3.500 | 1.563 | 12.875 | 1150 |
| EDA1524-27-27-3 | 14.875 | 23.750 | 2.875 | 2.875 | 4.000 | 2.063 | 14.375 | 1262 |
| All Items | W 14.875 | EB 1.125 | P 1.875 | TCP 1.375 | RPx 11.000 | RPg 0.750 | | |
| | L 23.750 | ER 0.625 | SU 2.375 | RPos 10.875 | RPy 3.875 | LPg 1.250 | | |

15.875 × 16.000

| ITEM NUMBER | W | L | A | B | C | S | H | WEIGHT (LBS) |
|-----------------|----------|----------|----------|------------|-----------|-----------|--------|--------------|
| EDA1616-23-23-3 | 15.875 | 16.000 | 2.375 | 2.375 | 3.500 | 1.563 | 12.875 | 825 |
| EDA1616-27-27-3 | 15.875 | 16.000 | 2.875 | 2.875 | 4.000 | 2.063 | 14.375 | 906 |
| All Items | W 15.875 | EB 1.125 | P 1.875 | TCP 1.375 | RPx 7.125 | RPg 0.750 | | |
| | L 16.000 | ER 0.625 | SU 2.375 | RPos 7.000 | RPy 4.375 | LPg 1.250 | | |

15.875 × 20.000

| ITEM NUMBER | W | L | A | B | C | S | H | WEIGHT (LBS) |
|-----------------|----------|----------|----------|------------|-----------|-----------|--------|--------------|
| EDA1620-23-23-3 | 15.875 | 20.000 | 2.375 | 2.375 | 3.500 | 1.563 | 12.875 | 1031 |
| EDA1620-27-27-3 | 15.875 | 20.000 | 2.875 | 2.875 | 4.000 | 2.063 | 14.375 | 1132 |
| All Items | W 15.875 | EB 1.125 | P 1.875 | TCP 1.375 | RPx 9.125 | RPg 0.750 | | |
| | L 20.000 | ER 0.625 | SU 2.375 | RPos 9.000 | RPy 4.375 | LPg 1.250 | | |

15.875 × 23.500

| ITEM NUMBER | W | L | A | B | C | S | H | WEIGHT (LBS) |
|-----------------|----------|----------|----------|-------------|------------|-----------|--------|--------------|
| EDA1623-23-23-3 | 15.875 | 23.500 | 2.375 | 2.375 | 3.500 | 1.563 | 12.875 | 1212 |
| EDA1623-27-27-3 | 15.875 | 23.500 | 2.875 | 2.875 | 4.000 | 2.063 | 14.375 | 1330 |
| All Items | W 15.875 | EB 1.125 | P 1.875 | TCP 1.375 | RPx 10.875 | RPg 0.750 | | |
| | L 23.500 | ER 0.625 | SU 2.375 | RPos 10.750 | RPy 4.375 | LPg 1.250 | | |

For six decades, D-M-E has been dedicated to helping moldmakers, molders, and mold designers be more efficient. Our family of hot runner solutions is just one part of that commitment. By offering a high-quality portfolio of advanced products, knowledgeable technical resources, and a full complement of service and support, we can help make your operation more productive and more profitable. All D-M-E products feature best-in-class components, applications engineering expertise, and our 100% satisfaction guarantee.

Serving customers in over 70 countries worldwide, no one equals D-M-E for injection molding solutions and support. D-M-E operates engineering, manufacturing, and distribution locations in the Americas, Europe, and Asia.



**World Headquarters
D-M-E Company**

29111 Stephenson Highway
Madison Heights, MI 48071
800-626-6653 *toll-free tel*
248-398-6000 *tel*
888-808-4363 *toll-free fax*
www.dme.net *web*
info@dme.net *e-mail*

D-M-E of Canada, Ltd.

6210 Northwest Drive
Mississauga, Ontario
Canada L4V 1J6
800-387-6600 *toll-free tel*
905-677-6370 *tel*
800-461-9965 *toll-free fax*
dme_canada@dme.net *e-mail*

D-M-E Europe C.V.B.A.

Industriepark Noord
B-2800 Mechelen Belgium
32-15-215011 *tel*
32-15-218235 *fax*
sales@dmeeu.com *e-mail*