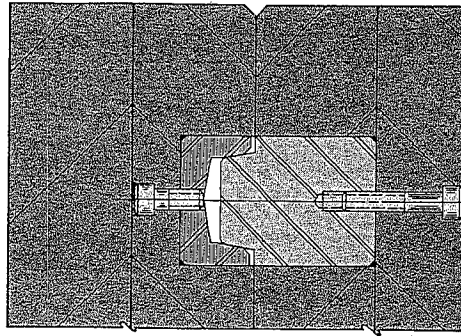
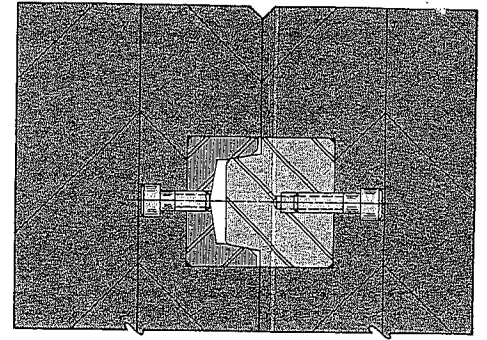


THROUGH



COMBINATION



BLIND

The above illustrations show three typical installations using D-M-E interlocks to suit different mold requirements. Shoulder mold plates are used with "through" construction, but not in "blind" pockets. Different "combinations" of through and blind construction may be used for a variety of applications.

In order to obtain accurate registry with tapered interlocks, the installation holes or pockets must, of course,

be accurately aligned. For this reason, through construction is recommended because the two plates can be clamped together and line-bored. Combination construction can also be line-bored or at least partially line-bored to create a pilot for the blind pocket. Blind pocket construction in both plates is the most difficult installation. Close attention is required to make certain the two pockets line up.



**D-M-E
COMPANY**

A FAIRCHILD INDUSTRIES COMPANY

WORLD HEADQUARTERS

29111 Stephenson Highway

Madison Heights (Detroit)

Michigan 48071

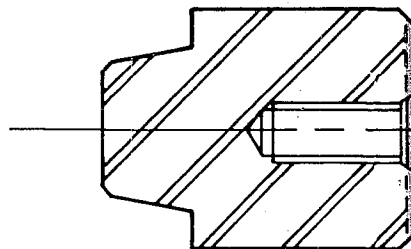
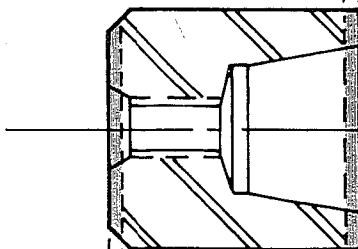
(810) 398-6000 Telex: 230670

TIPS 5-96
ME-0507-PS-012-A

Litho in U.S.A.

TIPS 5-96
ME-0507-PS-012-A

NOTE: THERE IS STOCK ALLOWANCE ON THE FRONT OF THE FEMALE TAPERED INTERLOCK. In order to locate the interlocks metal-to-metal on the tapered diameters, THE EXCESS STOCK MUST BE GROUND FROM THE FRONT FACE OF THE FEMALE DETAIL UNTIL THERE IS A SLIGHT CLEARANCE BETWEEN THE FACES OF THE MALE AND FEMALE WHEN ASSEMBLED. By precision fitting, the front face of the female detail can be ground so the interlocks will locate on both the tapered diameters and faces simultaneously.



THERE IS STOCK ALLOWANCE AT THE BACK OF BOTH MALE AND FEMALE DETAILS to permit fitting at assembly to match specific mold plate thicknesses and/or pocket depths.

IMPORTANT
READ BEFORE
INSTALLATION