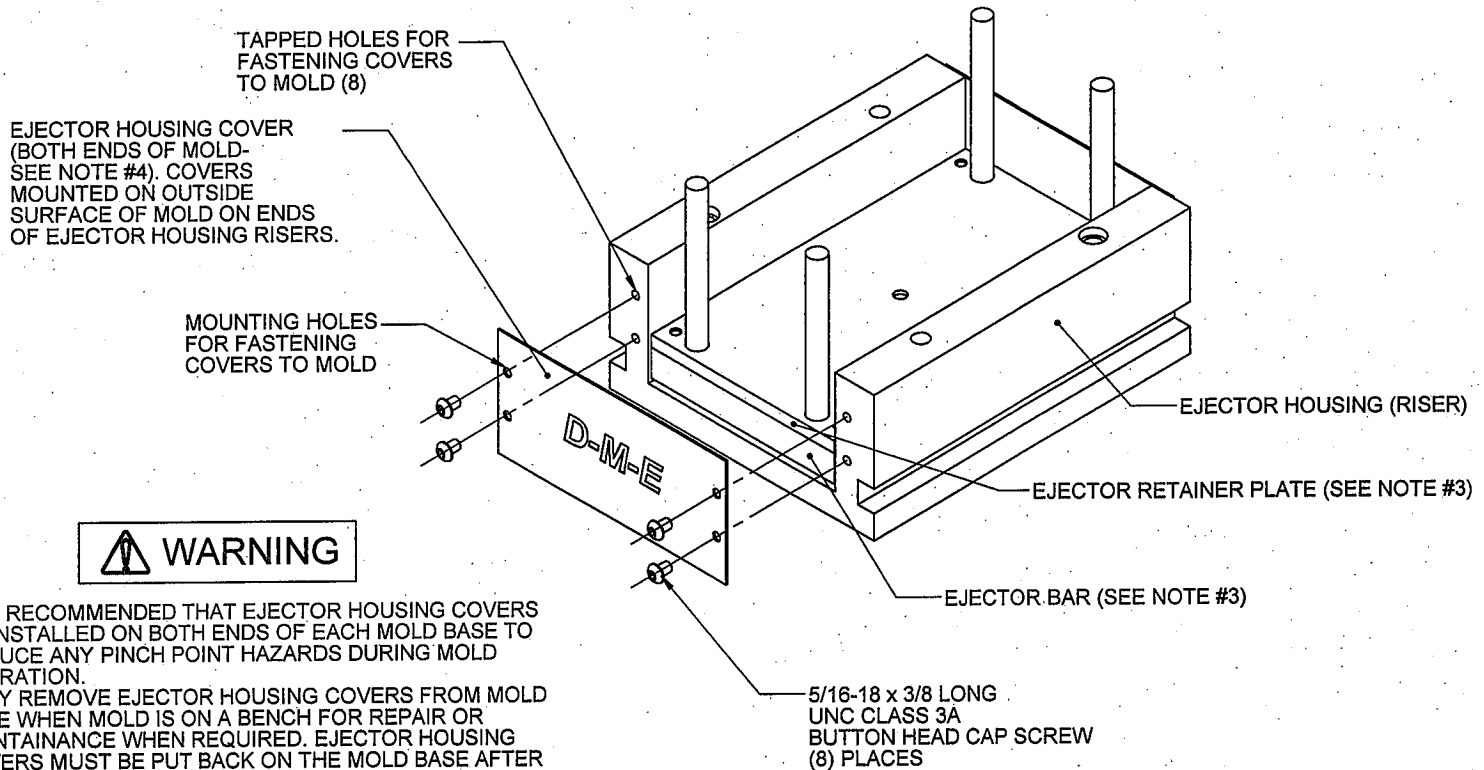


MOLD BASES

Packing slip for standard ejector housing covers
 Drawing no. ME-0102-PS-326(B) Catalog No. EHCS - 9983



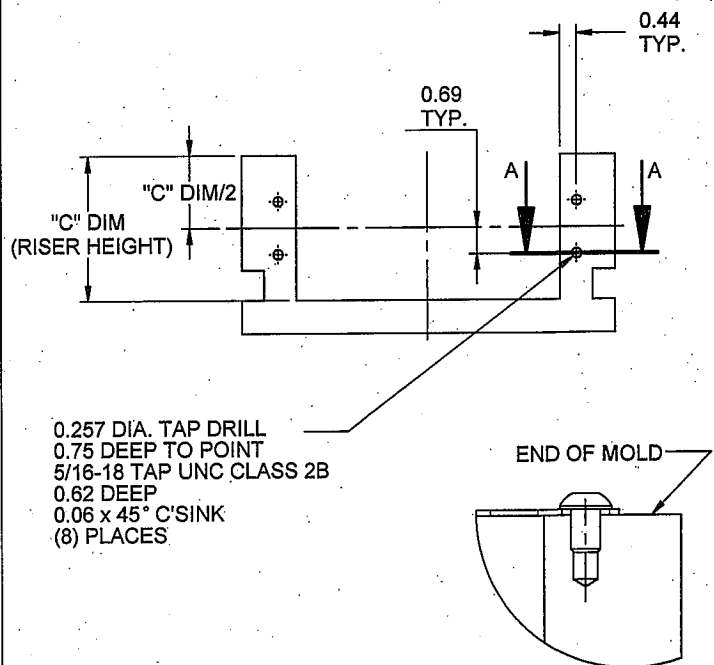
WARNING

IT IS RECOMMENDED THAT EJECTOR HOUSING COVERS BE INSTALLED ON BOTH ENDS OF EACH MOLD BASE TO REDUCE ANY PINCH POINT HAZARDS DURING MOLD OPERATION. ONLY REMOVE EJECTOR HOUSING COVERS FROM MOLD BASE WHEN MOLD IS ON A BENCH FOR REPAIR OR MAINTAINANCE WHEN REQUIRED. EJECTOR HOUSING COVERS MUST BE PUT BACK ON THE MOLD BASE AFTER SERVICE HAS BEEN COMPLETED.

RECOMMENDED DRILLING, TAPPING AND INSTALLATION FOR EJECTOR HOUSING COVERS.

1. DRILL TAP AND COUNTERSINK FOR 5/16-18 UNC CLASS 3-A BUTTON HEAD CAP SCREWS IN LOCATIONS, AS SHOWN IN "FIGURE 1", ON BOTH ENDS OF EJECTOR HOUSING RISERS FOR MOUNTING EJECTOR HOUSING COVERS ON OUTSIDE SURFACE OF MOLD.
2. FASTEN EJECTOR HOUSING COVERS TO MOLD WITH 5/16-18 x 3/8 LONG BUTTON HEAD CAP SCREWS ON BOTH ENDS OF MOLD.
3. EJECTOR RETAINER PLATE AND EJECTOR BAR MUST BE SHORTER THAN THE NOMINAL MOLD BASE LENGTH BY 0.110 MINIMUM (OR 0.055 ON EACH END OF MOLD). THIS PROVIDES SOME CLEARANCE BETWEEN THE EJECTOR HOUSING COVERS AND THE ENDS OF THE EJECTOR ASSEMBLY.
4. STANDARD (FLAT) EJECTOR HOUSING COVERS ARE AVAILABLE FROM D-M-E FOR MOST APPLICATIONS WHEN THE EJECTOR RETAINER PLATE AND THE EJECTOR BAR ARE A MINIMUM OF 0.110 SHORTER THAN THE NOMINAL MOULD BASE LENGTH (OR 0.055 SHORTER ON EACH END OF MOLD)
5. OCCASIONALLY, EXTERNAL MOLD COMPONENTS ARE INSTALLED ON THE ENDS OF THE MOLD, WHICH MAY REQUIRE MODIFICATIONS TO THE COVERS. HOWEVER, ANY MODIFICATION OF EJECTOR HOUSING COVERS MUST STILL PROVIDE ADEQUATE COVERAGE TO REDUCE ANY PINCH POINT HAZARDS DURING MOLD OPERATION.
6. FOR EXTENDED EJECTOR BAR APPLICATIONS, WHERE THE EJECTOR BAR IS LONGER THAN THE MOLD BASE LENGTH, THE CUSTOMER SHOULD FABRICATE EJECTOR HOUSING COVERS TO SUIT FOR BOTH ENDS OF MOLD TO REDUCE ANY PINCH POINT HAZARDS DURING MOLD OPERATION.

RECOMMENDED DIMENSIONS FOR DRILLING & TAPPING



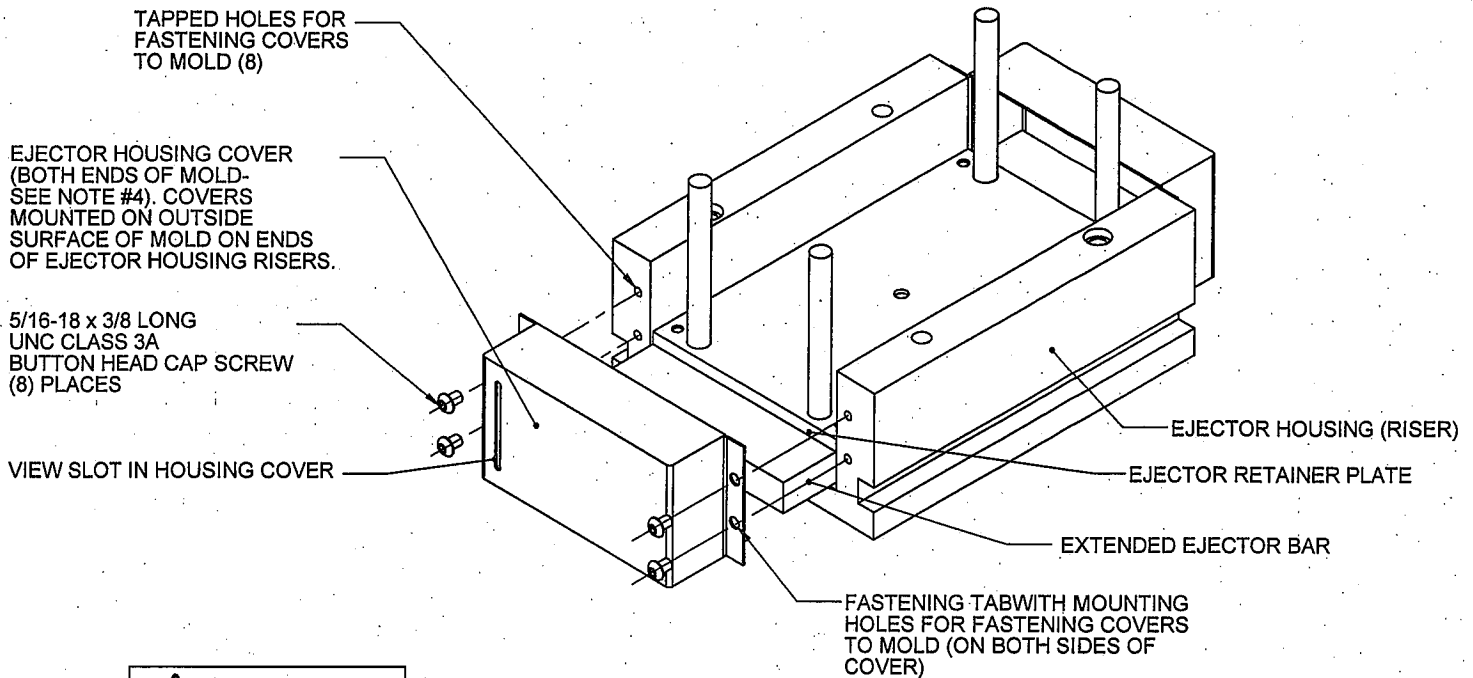
SECTION A-A
 SCALE 1 : 2
 (ENLARGED WITH EJECTOR HOUSING COVER AND BUTTON HEAD CAP SCREW SHOWN)

FIGURE 1
 (ALL DIMENSIONS ARE IN INCHES)

REFER TO WEBSITE, <http://www.dme.net>
 CUSTOMER FABRICATION OF EJECTOR HOUSING COVERS FOR EXTENDED EJECTOR BAR APPLICATIONS.
 REFER TO: CAT # EHCS - 9983

MOLD BASES

Packing slip for standard ejector housing covers
 Drawing no. ME-0102-PS-326(B) Catalog No. EHCS - 9983



WARNING

IT IS RECOMMENDED THAT EJECTOR HOUSING COVERS BE INSTALLED ON BOTH ENDS OF EACH MOLD BASE TO REDUCE ANY PINCH POINT HAZARDS DURING MOLD OPERATION. ONLY REMOVE EJECTOR HOUSING COVERS FROM MOLD BASE WHEN MOLD IS ON A BENCH FOR REPAIR OR MAINTAINANCE WHEN REQUIRED. EJECTOR HOUSING COVERS MUST BE PUT BACK ON THE MOLD BASE AFTER SERVICE HAS BEEN COMPLETED.

EJECTOR HOUSING COVERS FABRICATION AND INSTALLATION FOR "EXTENDED EJECTOR BAR".

1. RECOMMENDED MATERIAL TO BE USED FOR EJECTOR HOUSING COVERS SHOULD BE 16 GAGE (0.060 in.) THICK STAINLESS STEEL OR OTHER EQUIVALENT RIGID MATERIAL.
2. CUSTOMER TO FABRICATE COVERS TO FIT THE HOUSING WIDTH AND RISER HEIGHT DIMENSIONS, ALLOWING CLEARANCE FOR THE SIZE AND STROKE OF THE EJECTOR ASSEMBLY AND MAINTAIN CLEARANCE FOR FREE MOVEMENT. "FIGURE 1" SHOWS THE RECOMMENDED SIZE FOR THE FASTENING TAB. COVERS TO BE MOUNTED ON BOTH ENDS OF MOLD TO OUTSIDE SURFACE OF MOLD RISERS.
3. CUSTOMER TO SUPPLY (8) 5/16-18-3/8 LONG UNC CLASS 3A BUTTON HEAD CAP SCREW TO FASTEN EJECTOR HOUSING COVERS TO MOLD ON BOTH ENDS OF MOLD.
4. CUSTOMER TO FABRICATE COVERS TO ALLOW CLEARANCE FOR CYLINDERS OR OTHER EXTERNAL COMPONENTS MOUNTED TO EXTENDED EJECTOR BAR WHILE STILL REDUCING ANY PINCH POINT HAZARDS DURING MOLD OPERATION.
5. REFER TO DME WEBSITE FOR RECOMENDED DRILLING AND TAPPING ON THE EJECTOR HOUSING FOR MOUNTING THE EJECTOR HOUSING COVERS. DRILLING AND TAPPING FOR BOTH THE EXXTENDED EJECTOR BAR APPLICATION AND STANDARD EJECTOR BAR APPLICATION ARE IDENTICAL IF FASTENING TAB MOUNTING HOLES ARE THE SAME.

REFER TO WEBSITE, <http://www.dme.net>
 CUSTOMER FABRICATION OF EJECTOR HOUSING COVERS FOR EXTENDED EJECTOR BAR APPLICATIONS.
 REFER TO: CAT # EHCS - 9983

RECOMMENDED DIMENSIONS FOR DRILLING & TAPPING

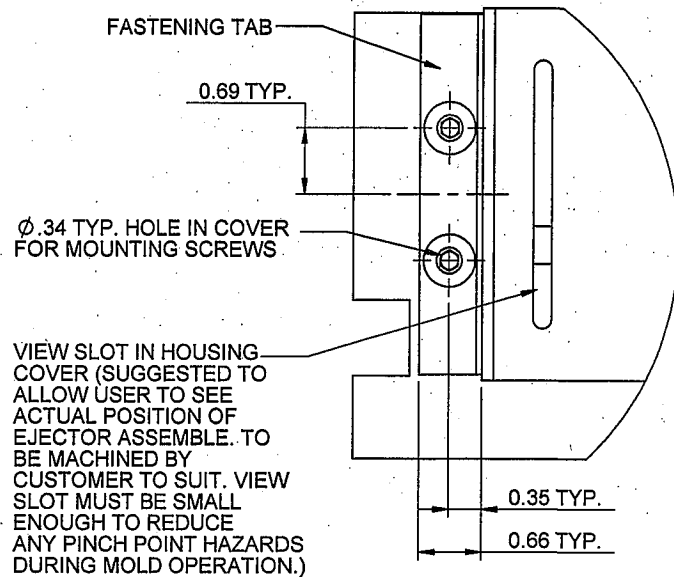


FIGURE 1

(ALL DIMENSIONS ARE IN INCHES)