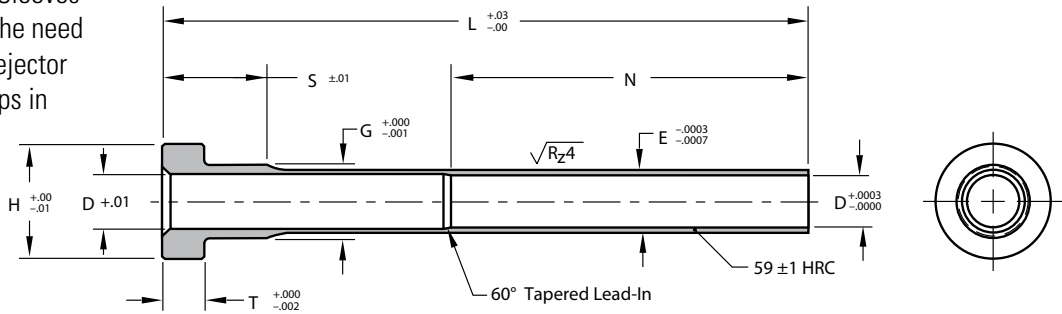


# Thin Wall Sleeves and Sleeve Extensions

## THIN WALL SLEEVES

DME Standard Thin Wall Sleeves reduce cost by replacing the need to buy expensive custom ejector sleeves or to machine steps in standard sleeves.

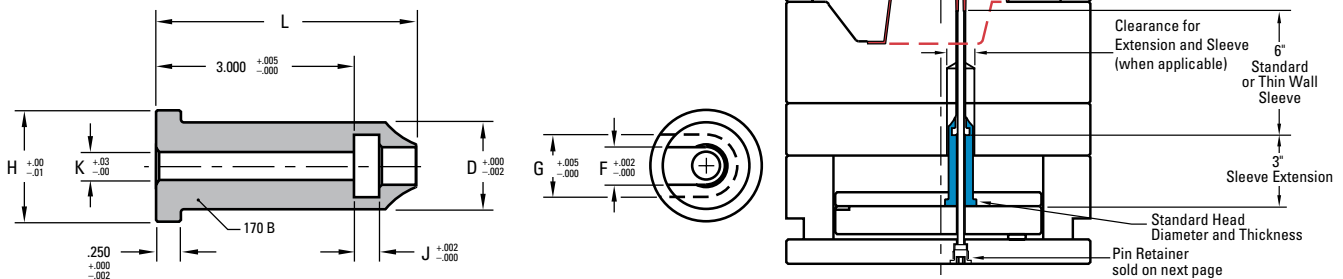


| ITEM NUMBER |         | Ø D I.D. |         | E     | G    | S SHOULDER LENGTH | H HEAD DIA | K HEAD THICK. | N BEARING LENGTH |
|-------------|---------|----------|---------|-------|------|-------------------|------------|---------------|------------------|
| 4"          | 6"      |          |         |       |      |                   |            |               |                  |
| TWS13M4     | TWS13M6 | 3/32     | (.0937) | .1563 | .188 | .500              | .37        | .187          | 1.75             |
| TWS15M4     | TWS15M6 | 1/8      | (.1250) | .1875 | .219 |                   | .40        |               |                  |
| TWS17M4     | TWS17M6 | 5/32     | (.1562) | .2187 | .250 |                   | .43        |               |                  |
| TWS21M4     | TWS21M6 | 3/16     | (.1875) | .2500 | .312 | .625              | .50        | .250          | 2.50             |
| TWS23M4     | TWS23M6 | 7/32     | (.2187) | .2813 | .344 |                   | .56        |               |                  |
| TWS25M4     | TWS25M6 | 1/4      | (.2500) | .3125 | .375 |                   | .62        |               |                  |
| TWS29M4     | TWS29M6 | 5/16     | (.3125) | .3750 | .438 |                   | .68        |               |                  |
| TWS33M4     | TWS33M6 | 3/8      | (.3750) | .4375 | .500 |                   | .75        |               |                  |

Electroless nickel coated .00003"-.00007" thick A2 58-60 HRC. To achieve longer lengths, use Sleeve Extensions.

## SLEEVE EXTENSIONS

Compatible with all industry-standard sleeves. DME Sleeve Extensions.



| ITEM NUMBER | NOMINAL SLEEVE I.D. | Ø D O.D. | Ø F   | G    | K    | J   | H HEAD DIA. | L REF |       |
|-------------|---------------------|----------|-------|------|------|-----|-------------|-------|-------|
| SSE13M3     | 3/32                | (.0937)  | .625  | .193 | .385 | .17 | .188        | .875  | 3.500 |
| SSE15M3     | 1/8                 | (.1250)  | .625  | .224 | .416 | .17 | .188        | .875  | 3.500 |
| SSE17M3     | 5/32                | (.1562)  | .625  | .255 | .448 | .17 | .188        | .875  | 3.500 |
| SSE21M3     | 3/16                | (.1875)  | .875  | .318 | .520 | .28 | .251        | 1.125 | 3.625 |
| SSE23M3     | 7/32                | (.2187)  | .875  | .349 | .570 | .28 | .251        | 1.125 | 3.625 |
| SSE25M3     | 1/4                 | (.2500)  | .875  | .380 | .630 | .28 | .251        | 1.125 | 3.625 |
| SSE29M3     | 5/16                | (.3125)  | 1.000 | .443 | .698 | .39 | .251        | 1.250 | 3.625 |
| SSE33M3     | 3/8                 | (.3750)  | 1.000 | .505 | .760 | .39 | .251        | 1.250 | 3.625 |

AISI 1215 (170 Brinell)  
Black oxide

US Patent No. 6,872,069