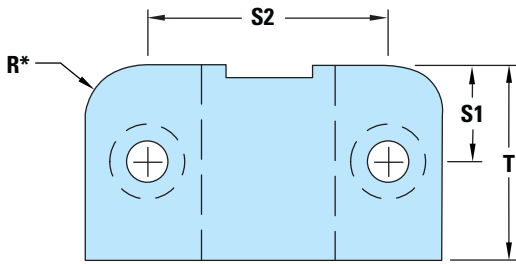
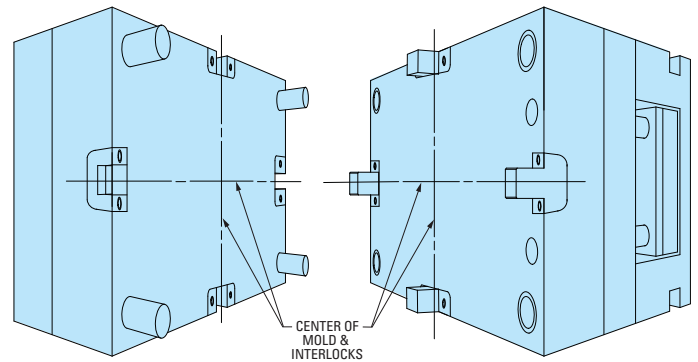
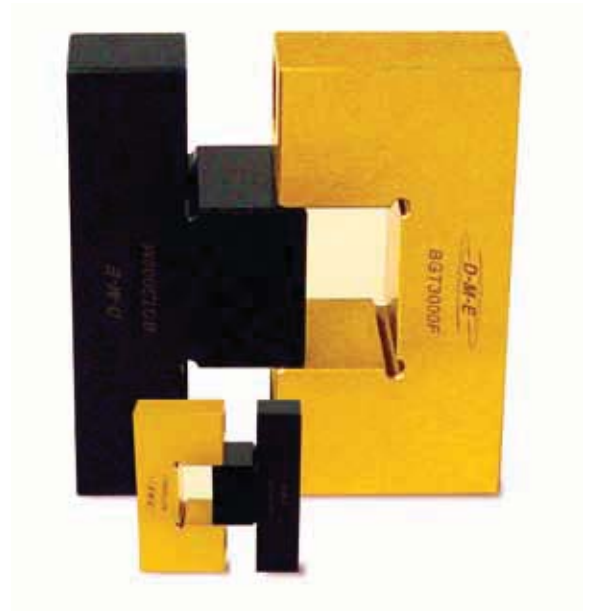
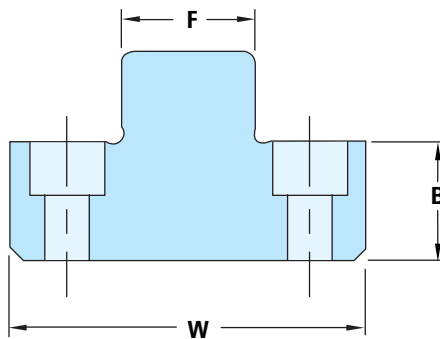
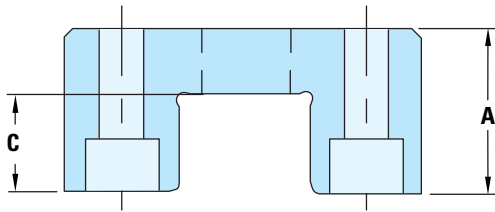


Black and Gold Top Interlocks - Inch



*Part Radius "R" is 1/32" larger than recommended pocket radius.



D-M-E Top Interlocks provide:

- Accurate alignment of mold halves
- Easy installation
- Industry-compatible sizes

Installation

- Install four (4) Top Interlocks per mold (one per side)
- Install Top Interlocks on the Center Line of each side of the mold

Black and Gold Top Interlocks – BGT

Female Interlock – Material: D2 Steel **Heat Treat:** Core Hardened to 57-61 HRC **Surface Treatment:** TiN – Titanium Nitride Coated

Male Interlock – Material: AISI H-13 Steel **Heat Treat:** 40-44 HRC **Surface Treatment:** Melonited (SBN)

ITEM NUMBER	W +.0000 -.0004	A +.000 -.002	B +.000 -.002	C ±.01	F .0001 / .0002 CLEARANCE PER SIDE	T +.000 -.002	R POCKET RADIUS +0/-0.02	S1 ±.01	S2 ±.01	SHCS SIZES	
										Male	Female
BGT1250	1.250	.625	.500	.41	.438	.625	.250	.312	.875	#6-32 x 5/8"	#6-32 x 3/4"
BGT1500	1.500	.875	.750	.53	.500	.875	.250	.437	1.000	#8-32 x 7/8"	#8-32 x 1"
BGT2000	2.000	1.125	.750	.66	.750	1.000	.375	.500	1.375	#10-32 x 1"	#10-32 x 1-1/4"
BGT3000	3.000	1.500	.750	.78	1.125	1.125	.500	.562	2.250	1/4-20 x 1"	1/4-20 x 1-3/4"
BGT3000S	3.000	1.250	.875	.75	1.125	1.750	.500	.875	2.250	5/16-18 x 1-1/8"	5/16-18 x 1-5/8"

NOTE: To order an individual Male interlock, add the suffix "M" to the item number.
To order an individual Female interlock, add the suffix "F" to the item number.

Black and Gold Side Interlocks - Metric

Cost-Saving Interchangeability

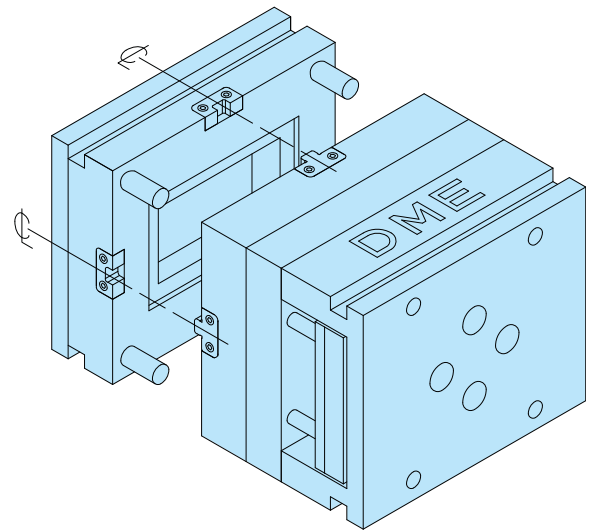
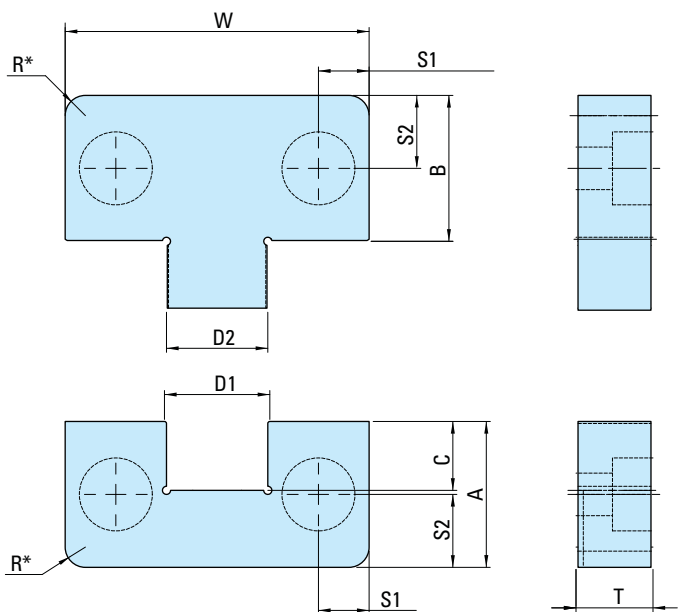
Thanks to precision manufacturing and precision tolerancing, every DME mold interlock component can be replaced independently, eliminating the need to swap out an entire set.

DME Side Interlocks provide:

- Accurate alignment of mold halves
- Easy installation
- Industry-compatible sizes

Installation

- Install four (4) Side Interlocks per mold (one per side)
- Install Side Interlocks on the Center Line of each side of the mold



* Part radius "R" is 1.00mm larger than recommended pocket radius.

Black and Gold Side Interlocks – BGS

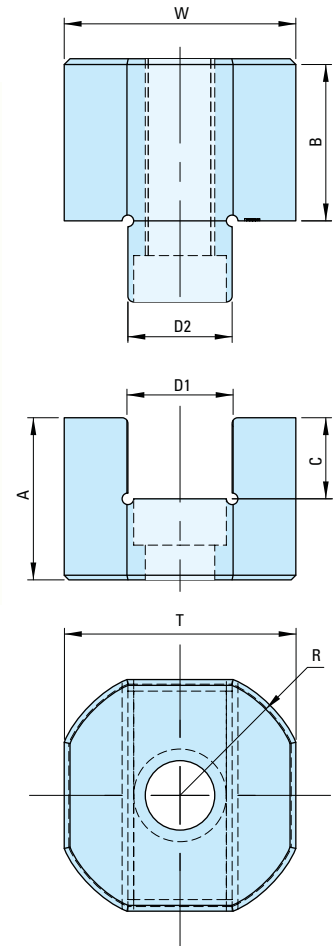
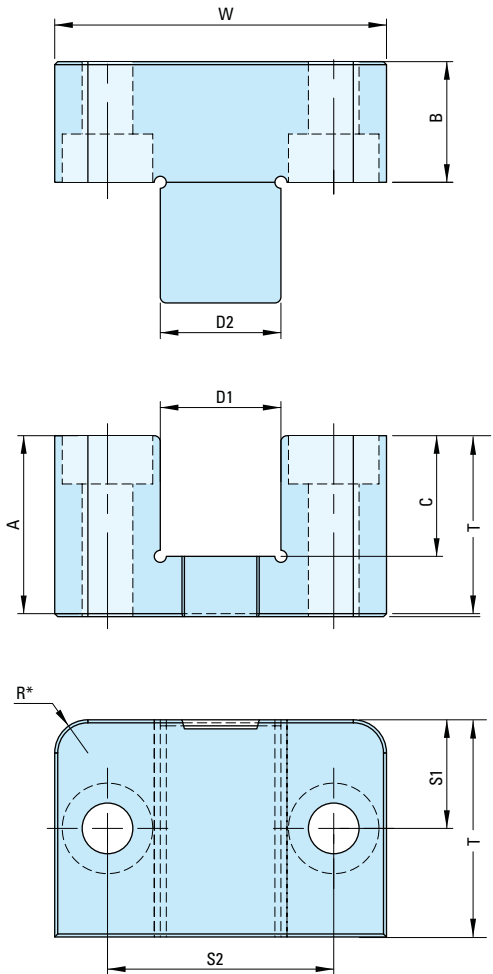
Female Interlock – Material: D2 Steel **Heat Treat:** Core Hardened to 57-61 HRC **Surface Treatment:** TiN – Titanium Nitride Coated

Male Interlock – Material: AISI H-13 Steel **Heat Treat:** 40-44 HRC **Surface Treatment:** Melonite (SBN)

ITEM NUMBER	T +.00 -.05	W +.00 -.01	A +.00 -.05	B +.00 -.05	C +.05 +.02	D1 +.0005 +.0002	D2 -0.005 -0.002	R POCKET RADIUS +0/-0.5	S1 ±0.2	S2 ±0.2	SHCS
BGS05016	16.00	50.00	21.50	21.50	12.0	17.000	17.000	5.0	8.0	11.0	M6-1.0 × 20 LG
BGS07519	19.00	75.00	36.00	36.00	17.0	25.000	25.000	5.0	12.5	18.0	M10-1.5 × 25 LG
BGS10019	19.00	100.00	45.00	45.00	23.0	35.000	35.000	5.0	15.0	22.0	M10-1.5 × 25 LG
BGS12525	25.00	125.00	45.00	45.00	23.0	35.000	35.000	5.0	20.5	22.0	M10-1.5 × 30 LG

NOTE: To order an individual Male interlock, add the suffix "M" to the item number.
To order an individual Female interlock, add the suffix "F" to the item number.

Black and Gold Top Interlocks - Metric



Industry-Leading Interchangeability

Every DME mold interlock component can be replaced independently, eliminating the need to swap out an entire set.

DME Top Interlocks provide:

- Accurate alignment of mold halves
- Easy installation
- Industry-compatible sizes

Black and Gold Top Interlocks – BGT

Female Interlock – Material: D2 Steel **Heat Treat:** Core Hardened to 57-61 HRC **Surface Treatment:** TiN – Titanium Nitride Coated

Male Interlock – Material: AISI H-13 Steel **Heat Treat:** 40-44 HRC **Surface Treatment:** Melonite (SBN)

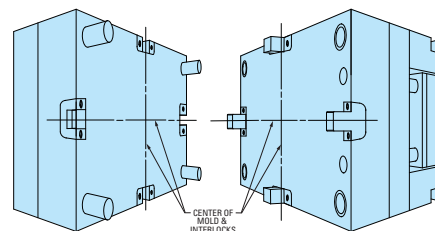
ITEM NUMBER	T +0.0 -0.05	W +0.0 -0.01	A +0.0 -0.05	B +0.0 -0.05	C +0.5 +0.2	D1 +0.005 +0.002	D2 -0.005 -0.002	R POCKET RADIUS +0/-0.5	S1 ±0.2	S2 ±0.2	SHCS (F)	SHCS (M)
BGT02020	20.00	20.00	14.00	14.00	7.0	9.000	9.000	5.0	–	–	M4 × 12 LG	M4 × 25 LG
BGT03526	26.00	35.00	25.00	15.00	16.0	11.000	11.000	8.0	13.0	23.0	M5 × 30 LG	M5 × 20 LG
BGT04530	30.00	45.00	25.00	15.00	16.0	15.000	15.000	8.0	15.0	30.0	M6 × 30 LG	M6 × 18 LG
BGT05536	36.00	55.00	30.00	20.00	20.0	20.000	20.000	8.0	18.0	37.5	M8 × 35 LG	M8 × 25 LG
BGT07536	36.00	75.00	35.00	20.00	26.0	30.000	30.000	8.0	18.0	52.0	M10 × 40 LG	M10 × 25 LG
BGT10045	45.00	100.00	60.00	20.00	41.0	40.000	40.000	8.0	22.5	70.0	M10 × 65 LG	M10 × 25 LG

NOTE: To order an individual Male interlock, add the suffix "M" to the item number.
To order an individual Female interlock, add the suffix "F" to the item number.

* Part radius "R" is 1.00mm larger than recommended pocket radius.

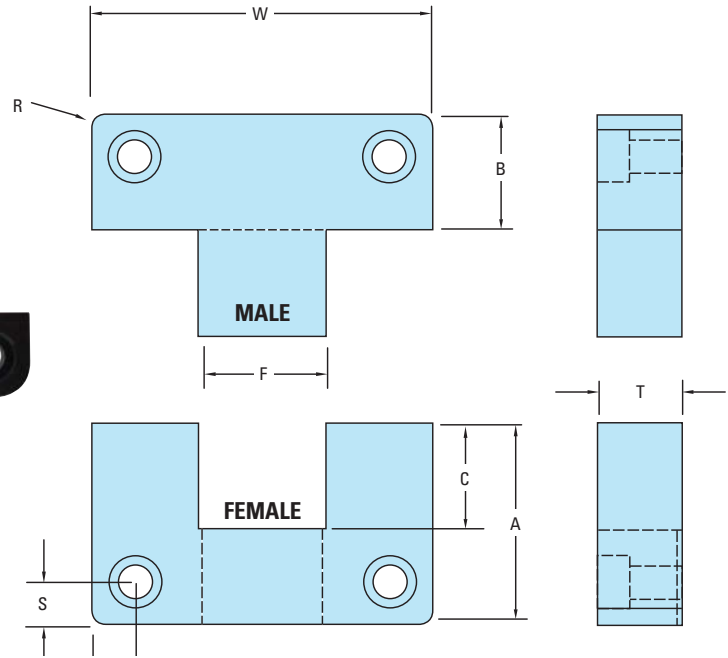
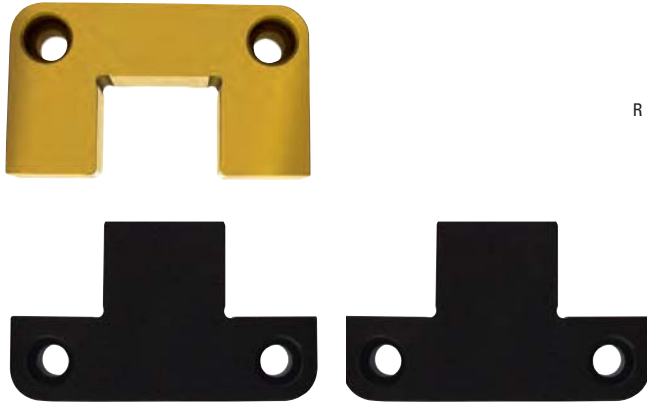
Installation

- Install four (4) Top Interlocks per mold (one per side)
- Install Top Interlocks on the Center Line of each side of the mold



NEW

Black and Gold Shuttle Side Locks



Cost-Effective Interchangeable Wear Surfaces
Melonite Adds Longevity

Melonite, a telluride mineral of nickel, is a surface treatment that improves wear resistance and corrosion resistance. All DME Black and Gold Male Interlocks are surface treated with melonite. This highly wear-resistance and corrosion resistance treatment process increases the longevity of DME Black and Gold Interlocks so that they provide positive alignment of mold plates much longer than interlocks that are not surface treated with melonite.

MOLD BASE LENGTH X WIDTH	RECOMMENDED SIDE INTERLOCK	ITEM NUMBER	ASSEMBLY	FEMALE ITEM NUMBER	QTY FEMALE	MALE ITEM NUMBER	QTY MALE
8x8 to 8x12	BGS1500	BGS1500FS	2 female – 1 male	BGS1500F	2	BGS1500M	1
8x12 to 11x14	BGS2000	BGS2000FS	2 female – 1 male	BGS2000F	2	BGS2000M	1
11x14 to 14x18	BGS3000	BGS3000FS	2 female – 1 male	BGS3000F	2	BGS3000M	1
14x18 to 16x26	BGS4000	BGS4000FS	2 female – 1 male	BGS4000F	2	BGS4000M	1
16x26 to 18x36	BGS5000	BGS5000FS	2 female – 1 male	BGS5000F	2	BGS5000M	1
		BGS1500MS	2 male – 1 female	BGS1500F	1	BGS1500M	2
		BGS2000MS	2 male – 1 female	BGS2000F	1	BGS2000M	2
		BGS3000MS	2 male – 1 female	BGS3000F	1	BGS3000M	2
		BGS4000MS	2 male – 1 female	BGS4000F	1	BGS4000M	2
		BGS5000MS	2 male – 1 female	BGS5000F	1	BGS5000M	2

Black and Gold Side Interlocks – BGS

Female Interlock – Material: A2 Steel **Heat Treat:** Core Hardened to 58–62 HRC **Surface Treatment:** TiN – Titanium Nitride Coated

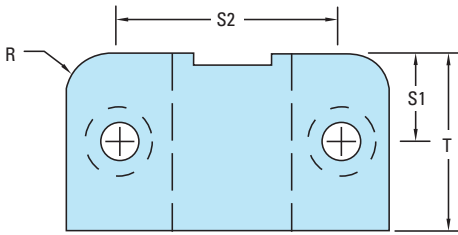
Male Interlock – Material: AISI H-13 Steel **Heat Treat:** 40–44 HRC **Surface Treatment:** Melonited (SBN)

ITEM NUMBER	W +.000 -.0004	A +.000 -.002	B +.000 -.002	C	F .0001 / .0002 CLEARANCE PER SIDE	T +.000 +.002	R POCKET RADIUS	S +.01	SHCS SIZE
BGS1500	1.500	.875	.875	.56	.563	.500	.187	.250	#8–32 × 5/8"
BGS2000	2.000	1.375	.875	.66	.750	.500	.187	.312	#10–32 × 5/8"
BGS3000	3.000	1.875	.875	1.13	1.250	.750	.250	.375	1/4–20 × 3/4"
BGS4000	4.000	2.375	1.375	1.25	1.500	1.000	.500	.500	3/8–16 × 1"
BGS5000	5.000	2.875	1.375	1.63	2.000	1.250	.500	.625	1/2–13 × 1–1/4"

NOTE: To order an individual Male interlock, add the suffix "M" to the item number.
 To order an individual Female interlock, add the suffix "F" to the item number.

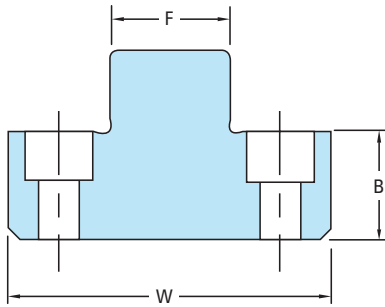
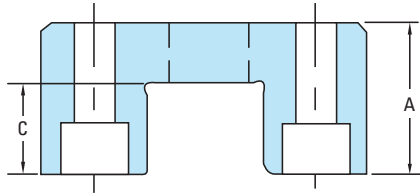
NEW

Black and Gold Shuttle Top Locks



Cost-Effective Interchangeable Wear Surfaces
Melonite Adds Longevity

Melonite, a telluride mineral of nickel, is a surface treatment that improves wear resistance and corrosion resistance. All DME Black and Gold Male Interlocks are surface treated with melonite. This highly wear-resistance and corrosion resistance treatment process increases the longevity of DME Black and Gold Interlocks so that they provide positive alignment of mold plates much longer than interlocks that are not surface treated with melonite.



MOLD BASE LENGTH X WIDTH	RECOMMENDED TOP INTERLOCK	ITEM NUMBER	ASSEMBLY	FEMALE ITEM NUMBER	QTY FEMALE	MALE ITEM NUMBER	QTY MALE
Less than 8x8	BGT1250	BGT1250FS	2 female – 1 male	BGT1250F	2	BGT1250M	1
8x8 to 8x12	BGT1500	BGT1500FS	2 female – 1 male	BGT1500F	2	BGT1500M	1
8x12 to 11x14	BGT2000	BGT2000FS	2 female – 1 male	BGT2000F	2	BGT2000M	1
11x14 to 14x18	BGT3000	BGT3000FS	2 female – 1 male	BGT3000F	2	BGT3000M	1
14x18 to 18x36 or larger	BGT3000S	BGT3000SFS	2 female – 1 male	BGT3000SF	2	BGT3000SM	1
		BGT1250MS	2 male – 1 female	BGT1250F	1	BGT1250M	2
		BGT1500MS	2 male – 1 female	BGT1500F	1	BGT1500M	2
		BGT2000MS	2 male – 1 female	BGT2000F	1	BGT2000M	2
		BGT3000MS	2 male – 1 female	BGT3000F	1	BGT3000M	2
		BGT3000SMS	2 male – 1 female	BGT3000SF	1	BGT3000SM	2

Black and Gold Top Interlocks – BGT

Female Interlock – Material: A2 Steel **Heat Treat:** Core Hardened to 58–62 HRC **Surface Treatment:** TiN – Titanium Nitride Coated

Male Interlock – Material: AISI H-13 Steel **Heat Treat:** 40–44 HRC **Surface Treatment:** Melonited (SBN)

ITEM NUMBER	W +.0000 –.0004	A +.000 –.002	B +.000 –.002	C ±.01	F CLEARANCE PER SIDE .0001 / .0002	T +.000 +.002	R POCKET RADIUS	S1 +.01	S2 +.01	SHCS SIZE
BGT1250	1.250	.625	.500	.41	.438	.625	.250	.312	.875	M: #6–32 × 5/8" F: #6–32 × 3/4"
BGT1500	1.500	.875	.750	.53	.500	.875	.250	.437	1.000	M: #8–32 × 7/8" F: #8–32 × 1"
BGT2000	2.000	1.125	.750	.66	.750	1.000	.375	.500	1.375	M: #10–32 × 1" F: #10–32 × 1–1/4"
BGT3000	3.000	1.500	.750	.78	1.125	1.125	.500	.562	2.250	M: 1/4–20 × 1" F: 1/4–20 × 1–3/4"
BGT3000S	3.000	1.250	.875	.75	1.125	1.750	.500	.875	2.250	M: 5/16–18 × 1–1/8" F: 5/16–18 × 1–3/8"

NOTE: To order an individual Male interlock, add the suffix "M" to the item number.
 To order an individual Female interlock, add the suffix "F" to the item number.

Cost-Effective Interchangeable Wear Surfaces

Melonite Adds Longevity

Melonite, a telluride mineral of nickel, is a surface treatment that improves wear resistance and corrosion resistance. All DME Black and Gold Male Interlocks are surface treated with melonite. This highly wear-resistance and corrosion resistance treatment process increases the longevity of DME Black and Gold Interlocks so that they provide positive alignment of mold plates much longer than interlocks that are not surface treated with melonite.



World Headquarters

DME Company

29111 Stephenson Highway
Madison Heights, MI 48071
800-626-6653 *toll-free tel*
248-398-6000 *tel*
888-808-4363 *toll-free fax*
www.dme.net *web*
sales@dme.net *e-mail*

DME Company

6210 Northwest Drive
Mississauga, Ontario
Canada L4V 1J6
800-387-6600 *toll-free tel*
905-677-6370 *tel*
800-461-9965 *toll-free fax*
dme_canada@dme.net *e-mail*

DME Europe C.V.B.A.

Industriepark Noord
B-2800 Mechelen Belgium
32-15-215011 *tel*
32-15-218235 *fax*
sales@dmeeu.com *e-mail*